



DESK

Digital Experience **System Kit**

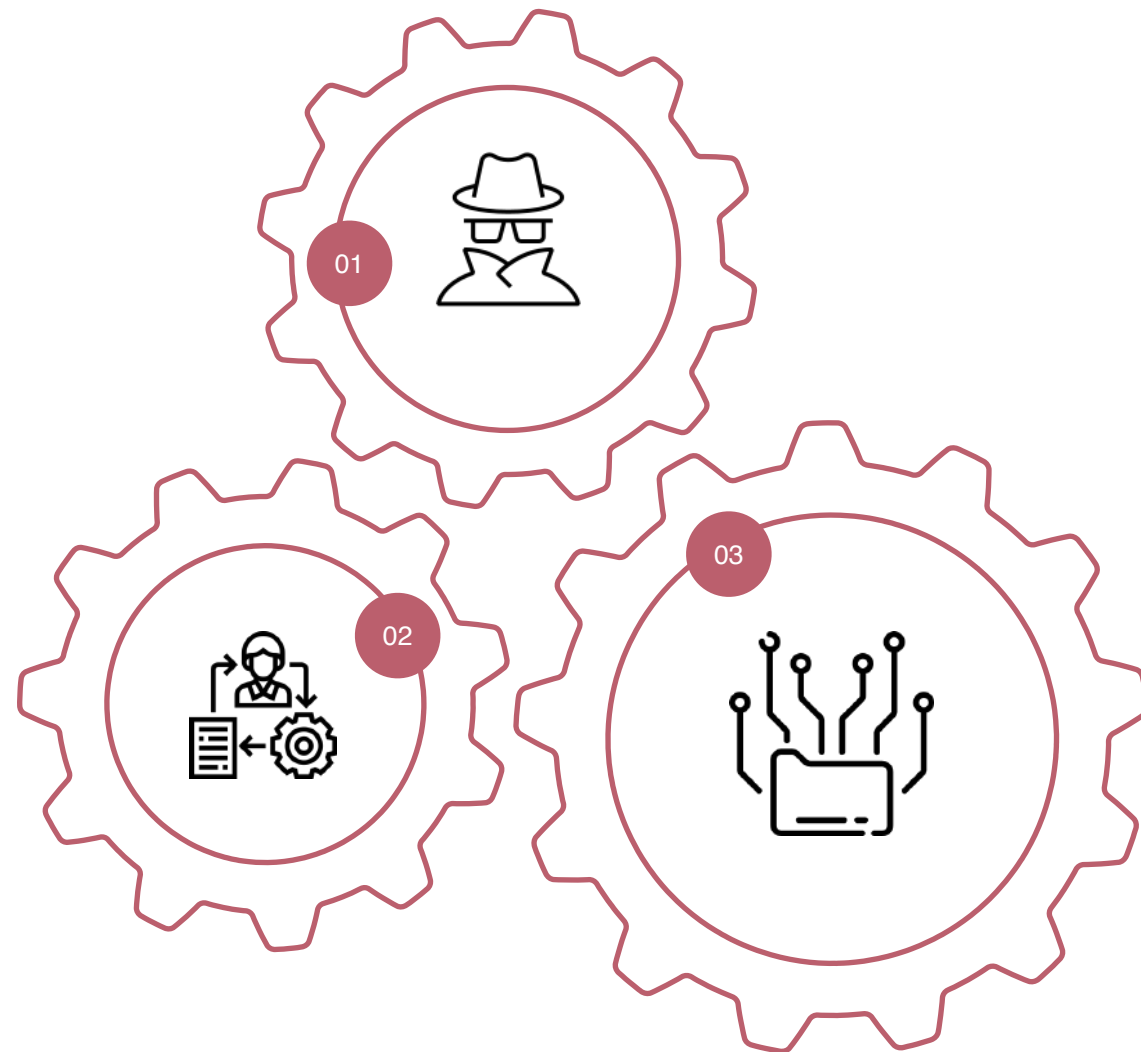
PRICING: LICENSING PRINCIPLES

LICENSING PRINCIPLES

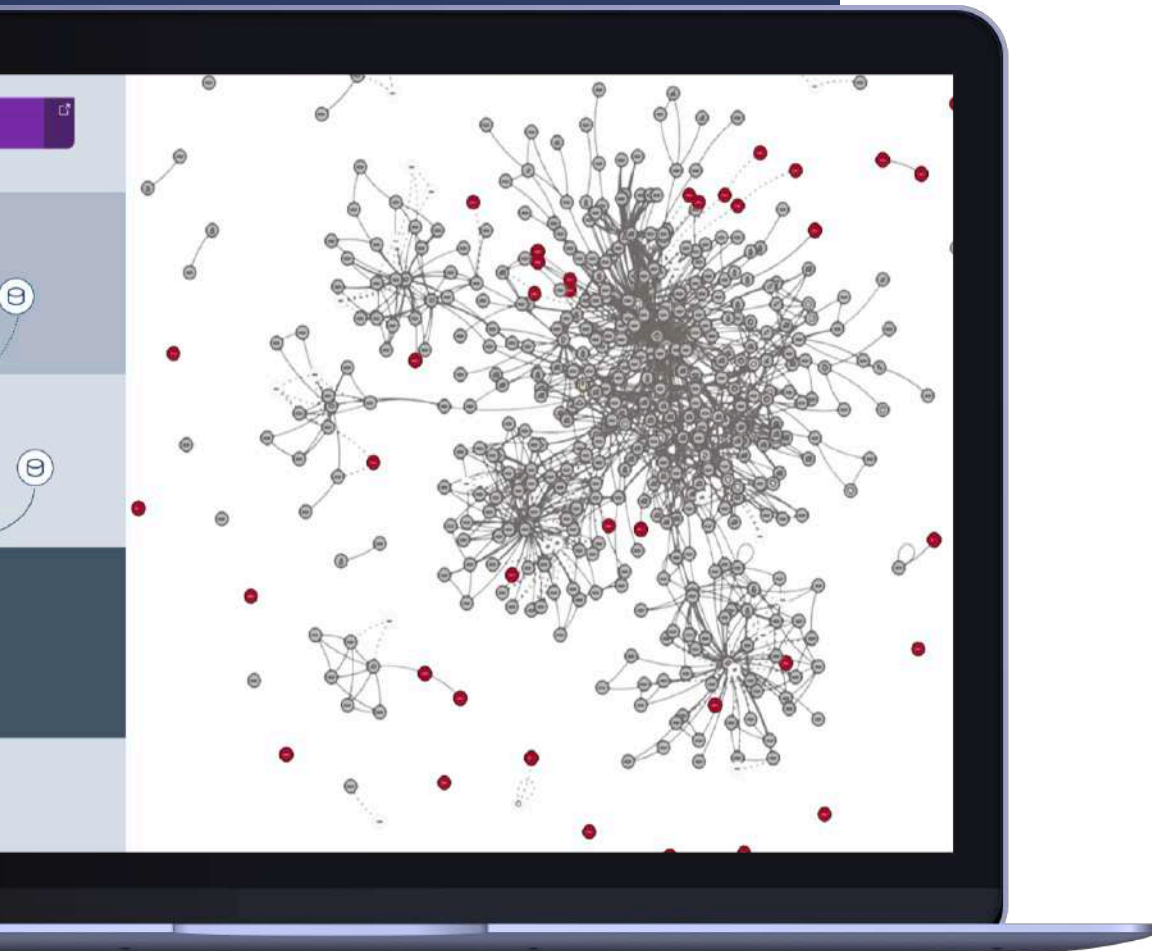
- 01** **DESK agent**
By Random Access Memory (RAM).
16 GB = 1 license.

- 02** **DESK E-data**
- A** Session analysis
 - B** Synthetic tests
 - C** Session replay

- 03** **DESK user path**
- A** Logs
 - B** External metrics
 - C** Custom plugins



COEFFICIENT



DESK AGENT

| RANDOM ACCESS MEMORY | FULL STACK CODE MONITORING | INFRASTRUCTURAL MODE |
|----------------------|----------------------------|----------------------|
| 1.6 GB | 0.10 | 0.03 |
| 4 GB | 0.25 | 0.075 |
| 8 GB | 0.5 | 0.15 |
| 16 GB | 1 | 0.3 |
| 32 GB | 2 | 0.6 |
| 48 | 3 | 0.9 |
| 64 | 4 | 1 |
| nx16 GB | n | 1 |

DESK E-data

| SESSION ANALYSIS* | SYNTHETIC TESTS | SESSION REPLAY |
|--|---|---|
| by number of visits. Coefficient = 0.25 | by the number of checks. Coefficient = 1 | by number of sessions. Coefficient = 1 |

Sessions are analyzed by the number of visits. Session lasts until: 200 actions / Browser close/app messages / Inactivity for more than 30 minutes.

LICENSING PRINCIPLES

DESK USER PATH



DESK USER PATH

- Included 200,000 **DESK user path** (= 381 metrics captured every minute) for each installation.
- Included 1000 metrics for each agent in full mode (per 1 **DESK** agent).
- Licensed in the amount of 1 million units for contracts for 1-3 years and the number is updated every year.
- Calculated by DataPoint, where 1 datapoint = 0.001 **DESK user path**.

For example, when transmitting a metric via the API every minute, this will be $1 \text{ datapoint} * 60 \text{ minutes} * 24 \text{ hours} * 365 \text{ days} * 0.001 \text{ DESK user path} = 525.6 \text{ KA user path per year}$.

LOG MONITORING

Licensed by **DESK user path** (external data sources)
Counted per line or message in the log file



- Each of them consumes 0.0005 **DESK user path**
- 1 GB = 1 million events
- 1 million events x 0.0005 **DESK user path** = 500 **DESK user path** per 1 GB